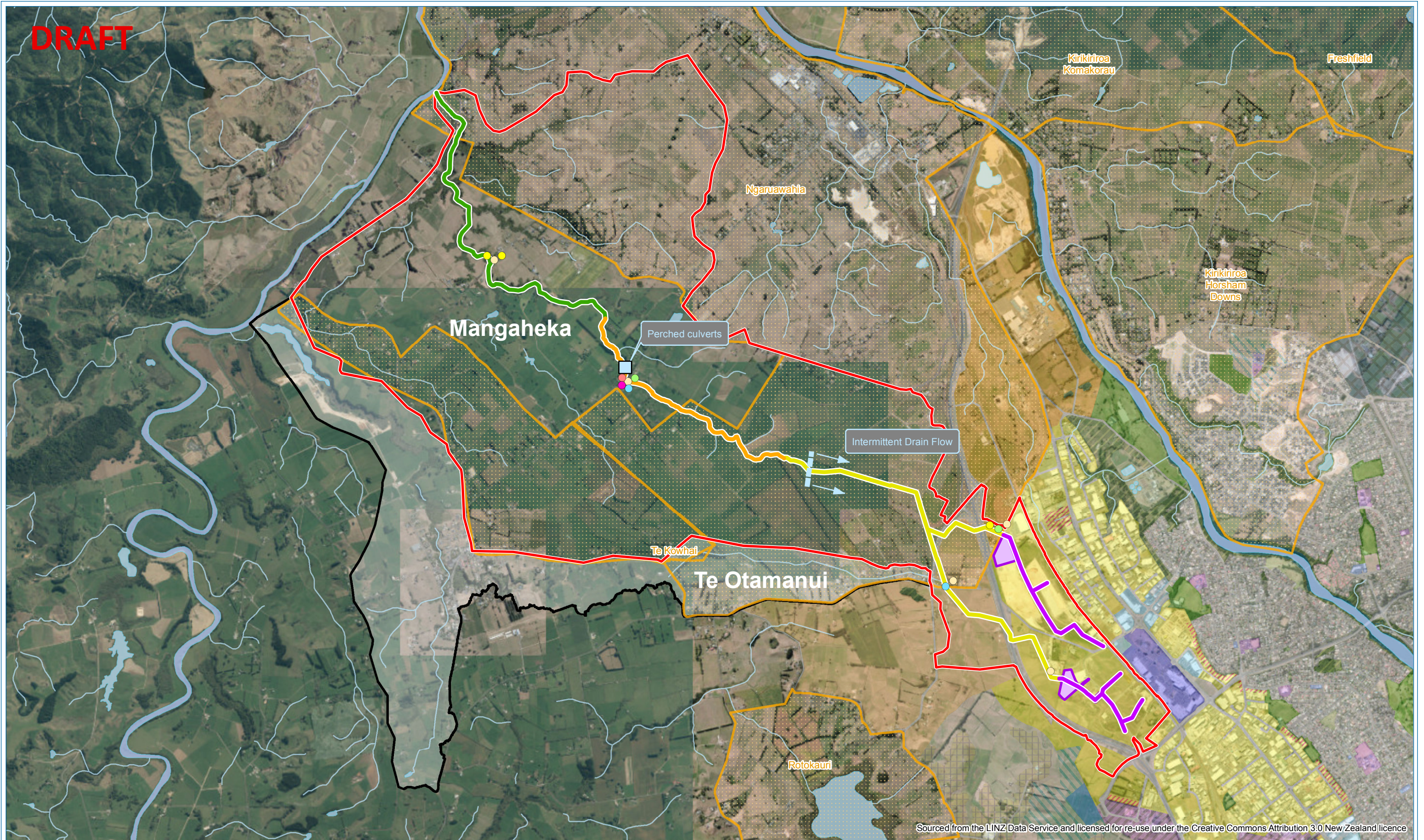


**DRAFT**



Sourced from the LINZ Data Service and licensed for re-use under the Creative Commons Attribution 3.0 New Zealand licence

**KEY**

- |                                  |                         |                          |                        |              |               |                     |                              |                                |
|----------------------------------|-------------------------|--------------------------|------------------------|--------------|---------------|---------------------|------------------------------|--------------------------------|
| <b>Stormwater Classification</b> | Artificial (Swale)      | Natural Stream (Wetland) | <b>Freshwater Fish</b> | Longfin eel  | Gambusia      | No species recorded | Mangaheka Catchment Boundary | WRC Drainage Scheme Boundaries |
|                                  | Artificial (Farm Drain) | Modified Stream          |                        | Shortfin eel | Banded kokopu | Black mudfish       | Te Otamanui Catchment        |                                |
|                                  |                         |                          |                        |              |               | Artificial Ponds    |                              |                                |

# Map 5: Ecological Hydrography & Fish

**DRAFT**

DISCLAIMER: While Hamilton City Council has exercised all reasonable skill and care in controlling the contents of this information, Hamilton City Council will not be liable for any costs, loss, injury, damage or expense whatsoever whether direct, indirect, special or consequential, suffered or incurred arising from the use of the digital data, whether arising in contract, negligence or otherwise.