

1. Hiikeikei.

Natural log steppers closely spaced. Diameter varies.
2. Ko-papa/Balance beams.

Big-long natural branches, creating platforms to build balance skills. Trail linked to poutama and hiikeikei to metaphorically represent the undertaking of a journey.
3. Piki-rakau/climbing posts.

Tall natural timber climbing poles.
4. Poutama.

Natural log stepping-stones carefully placed further apart than the hiikeikei for slow purposeful steps. Height varies.
5. Telescope.
6. Senior play equipment.

Propose some existing school play equipment relocated to the new playground site. Timber poles and platforms replaced. Items include monkey bars, commando net, oval ladder and other climbing/hanging items.
7. Bid bath bowl.
8. Palisade boundary treatment.

1.3-metres-high. Brustics™ Eucalypt panels.
9. Pathways.

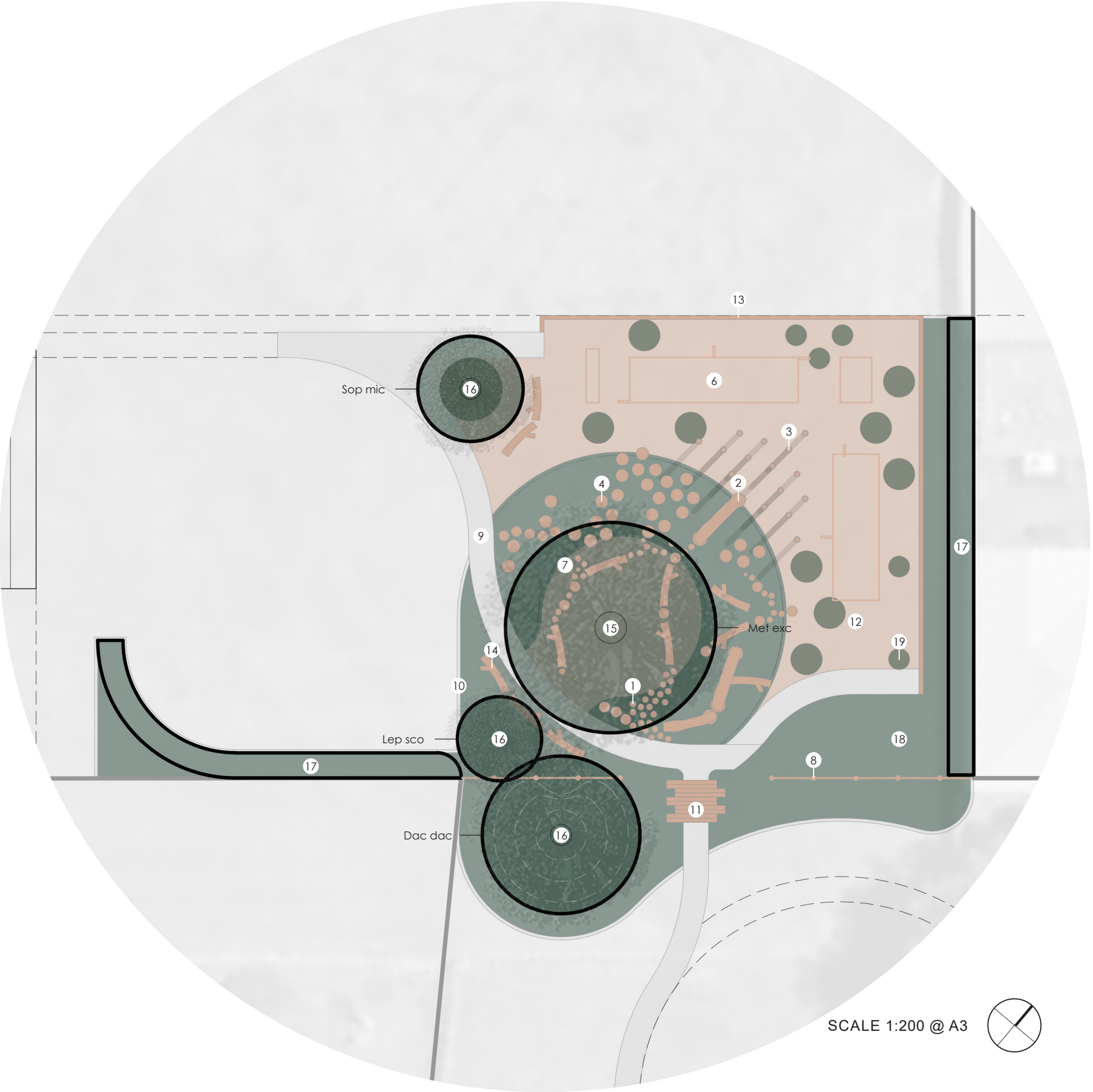
1.2-metres-wide.
- 10.Mowing strip.
- 11.Hardwood entry rumble strip.
12. Safety from falling.

Woodchip playground safety from falling surface or approved equivalent.
- 13.Timber edging.
- 14.Natural log benches.
15. The crinkum crankum climbing tree.

*Metrosideros excelsa* (poohutukawa).
16. Native trees.

*Leptospermum scoparium* (maanuka).

*Sophora microphylla* (koowhai).
- 17.Native planting.
- 18.Low level native planting.



SCALE 1:200 @ A3

